



# ***As You Like It***

## **Audience Access Guide**

To help prepare you to your visit to  
the Freewill Shakespeare Festival  
June 27 - July 20, 2025

# GETTING TO THE THEATRE

The Spiegeltent is accessible via transit, biking, and parking.

## Public Transit



You can take the bus or LRT. The closest LRT station is Quarters Station or the Churchill Station, which has wheelchair access.

Quarters Station is 550 metres away from the entrance. It is an approximately 10 minute walk away. Churchill Station is 900 metres away from the entrance. It is an approximately 15 minute walk away.

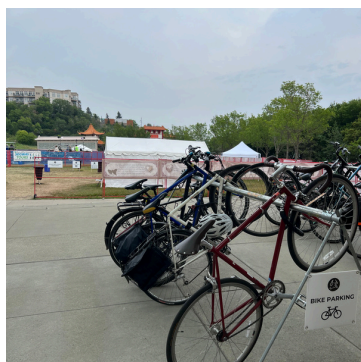


Up to date information about the Transit Centres is available [here](#).

If you are taking the bus, there are several stops available along Jasper Avenue and near the Low Level Bridge.

Details on recommended walking paths can be found on our [Your Visit](#) page.

## Biking



There are security monitored bike racks inside the main gates to the site to the right of the entrance. You will need to bring your own lock.

## Parking



The nearest parking spaces are at the paid parking lot beside our site, nearest the Shumka Stage.

If you are able to walk appoximately 10-15 minutes with some incline/decline, that you find alternative parking or use transit to get to site.



If you are driving to site, there are several paid parking options just off of Jasper Avenue. We recommend using the [City of Edmonton website](#) for details on payment and parking areas.

# ABOUT THE SITE

## Entrance



This is the main entrance. There are 6 steps down to the grass lobby area. There is a ramp down to the lobby area to the left of the entrance. The steps are 35.6cm (14in) on the tread and a depth of 12cm (5in) for the rise.

The lobby and theatre areas are a grass field and may be generally uneven but the grass is short.



There is a ramp to the left of the stairs with the railing on the right side.

It is 6m (20.5ft) in length with a change of 40cm (16in) throughout. It is a gentle incline but does end at grass. A wooden board has been added to smooth out the change.

## Lobby



As you enter the lobby, a volunteer or staff will ask for your name and check you in. If you need to purchase tickets, the Box Office is located in the tent to the left.

The Box Office and Merchandise tent are located on the left side.

The Concession and Bar tent are located on the right side.



# ABOUT THE SITE



Gates to the lobby open at 6:30pm on evening shows and 1:00pm on matinee shows. The doors into the theatre will open around a half hour before the start of the show (1:30pm or 7pm).

You are welcome to relax on the grass, stand, or sit on the chair you brought.

## Seating



We recommend bringing your own chair to the venue as we have grass seating. There are three sets of bleachers available but are challenging to climb due to the height.

There is open seating around the majority of stage so you are welcome to seat anyway.

## Ticketing

You do not need your QR code. We only need the name under which the tickets were purchased. Provide your name to the volunteer near the lobby entrance and they will check you in.

# ADDITIONAL INFORMATION

## Chill Zone



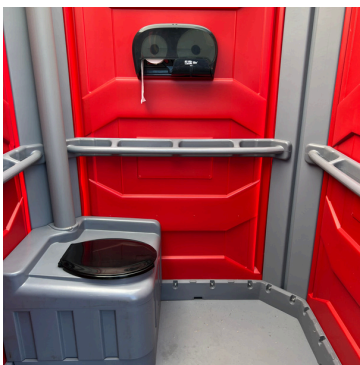
There is a large field area behind the theatre space, in the lobby, that you are welcome to relax in at any time during the show. If you need any additional support, please reach out to a staff or volunteer.

## Washrooms



There are washrooms located in the main grass lobby area. They are all Port-a-Potties that are cleaned regularly.

Two of the washrooms are labelled as Wheelchair accessible. beside



# GENERAL INFORMATION



This is the stage. There are additional items added to it like tents. This is where the actors will be performing. Actors will be using the entrances on either side, from behind the stage, and behind the audience.



If you need help, please ask any of our volunteers or staff. Volunteers are wearing green shirts with “As You Like It” on the front. Staff are wearing black shirts with a line drawing of Shakespeare on it. They are also wearing headsets.



Staff are good people to go to if you feel worried about anything.



# THE CAST - page 1

This is CELIA



This is CELIA  
dressed as ALIENA



This is ROSALIND



This is ROSALIND  
dressed as GANYMEDE



This is ORLANDO



This is DUKE  
FREDERICK

This is DUKE SENIOR

This is LE BEAU



# THE CAST - page 2



This is CHARLES



This is PHOEBE



This is OLIVER



This is AMIENS

This is WILLIAM



This is ADAM



This is CORIN



# THE CAST - page 3



This is JAUQUES



This is MARTEXT



This is HYMEN

This is TOUCHSTONE



This is AUDREY

# ***ABOUT AS YOU LIKE IT - page 1***

Duke Frederick has usurped his brother, Duke Senior, who now lives in exile in the Forest of Arden. Orlando, mistreated by his older brother Oliver, wins a wrestling match and catches the eye of Rosalind, Duke Senior's daughter.

Though she lives at court under the protection of Duke Frederick, Rosalind is soon banished. She disguises herself as a young man, "Ganymede," and flees to the forest with her cousin Celia (disguised as a shepherdess) and the court fool Touchstone.

In the Forest of Arden, the banished Duke Senior lives a contented pastoral life with his loyal followers. Orlando also flees to the forest with his elderly servant Adam, escaping his older brother Oliver. Lovesick, Orlando begins posting love poems for Rosalind on the trees.

Rosalind, still disguised as Ganymede, encounters Orlando and offers to "cure" him of his lovesickness by pretending to be Rosalind so he can practice wooing her. This sparks a series of clever, flirtatious exchanges. Since they are in a forest where magic can occur, love begins to blossom! Touchstone begins courting a country girl named Audrey and Phoebe, a shepherdess, falls in love with Ganymede, unaware she's actually Rosalind in disguise.

# ***ABOUT AS YOU LIKE IT - page 2***

Rosalind continues to test Orlando's love while managing the complicated tangle of affections around her. Phoebe rebuffs her admirer Silvius and pines for Ganymede. Touchstone and Audrey's quirky romance progresses. The forest becomes a space where social rules blur and true feelings emerge.

Oliver, now repentant after being saved by Orlando (who almost is eaten a lion?!), arrives in the forest and falls in love with Celia. Rosalind finally reveals her true identity, resolving all the confusion.

Four couples are joyfully united: Rosalind and Orlando, Celia and Oliver, Touchstone and Audrey, and Silvius and Phoebe. News comes that Duke Frederick has repented and returned the throne to Duke Senior. The play ends with songs, celebration, and a dance!

# SHOW NOTES - page 1

- The play is around two hours long with a 15-minute intermission. You can
- A voice recording will let you know 5 minutes before the show will begin. Another voice recording will let you know when the show will start immediately.
- The actors will walk through the audience throughout the show and will be entering and exiting from backstage as well as behind you. They also all have mics.
- The show opens with an actor turning on a leaf blower and talking while blowing it around. He does not blow it in the faces of the audience; the dialogue doesn't matter in this moment, and it is only brief. It is rather loud.
- There are a lot of bright colours in this show.
- Near the beginning of the show and at the end, characters enter on a wheeled Segway. They both wear helmets for safety and are trained to use these devices.
- Duke Frederick often speaks in a yelling voice. The actors are aware this is happening and may appear scared but are safe.
- Rosalind is banished and begins to cry. The actor is safe and comfortable for the duration of this and is aware of what is happening.
- There is singing and dancing throughout the play.
- Characters will appear from around the theatre space and may begin speaking from behind the audience. They will make their way to the stage.

# SHOW NOTES - page 2

- There are some surprising and abrupt sound effects, mostly music used as transitions between scenes, and when two characters ‘fall in love at first sight.’
- Jaques will use a vape during the show, so there will be a bit of smoke.
- This show is very active and fast-paced. Actors may interact or make eye contact. You are welcome to interact at your comfort level.
- At the end of the first act, Orlando will ask people to stand up and pretend to be trees. This is optional, and you are not required to participate. If you are interested in participating but cannot stand, please lift your arms to imitate tree branches.
- At intermission, a live second announcement will let you know when the second act is about to start.
- William is thrown a basket and fake fruit with a blanket placed on his head. The actor is safe and comfortable for the duration of this and is aware of what is happening.
- As it is an outdoor venue, there are some additional considerations. You may hear sirens or other noises from the traffic or birds in the area. If it does rain, we may pause the show briefly until the weather subsides. There is no shade in the theatre space, so we recommend bringing an umbrella or shade or rain.
- Oliver will show a handkerchief that has a red mark on it. It is not blood and only imitates it.
- Orlando will come on with his hand in a sling. He is not actually injured.
- At the end of the show, all performers dance together to a disco-style beat.